

27 4W 4N
BENCH MARK SUMMARY

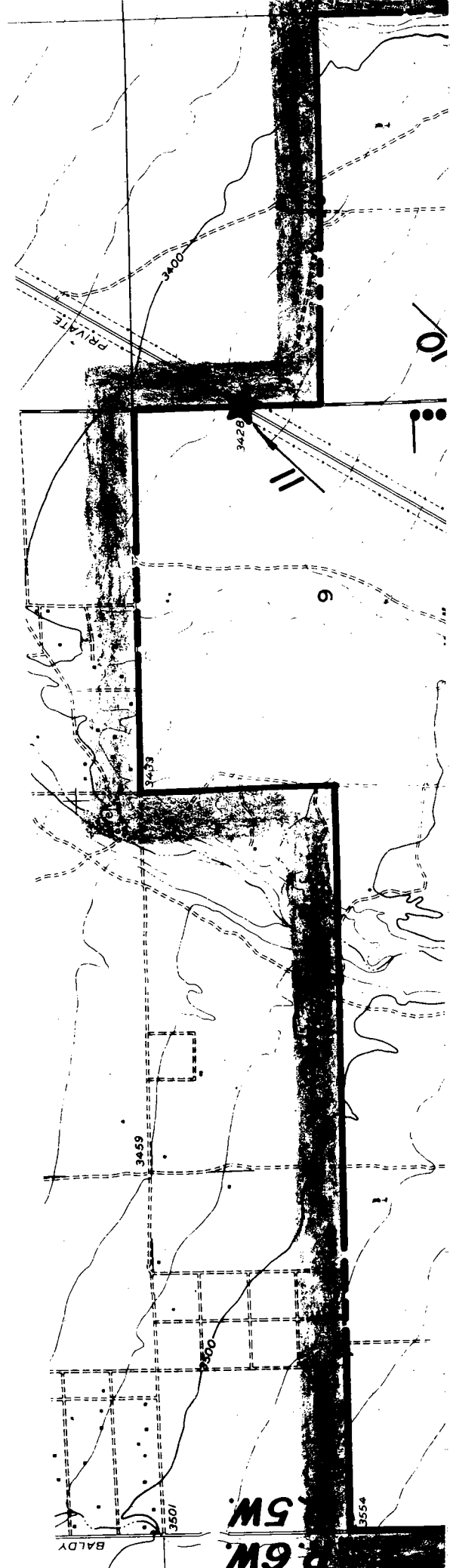
- no 1. " " ON SOUTHWEST CORNER DROP INLET 64' RIGHT OF STATION 66+06 EAST FRONTAGE ROAD
ELEVATION: 4074.34.
- no 2. HASP ON DROP INLET PAINTED ORANGE 22' RIGHT OF STATION 92+00 WEST ROAD BED
INTERSTATE NO. 15 ELEVATION: 4035.80.
- no 3. HASP ON DROP INLET PAINTED ORANGE 22' RIGHT OF STATION 103+00 WEST ROAD BED
INTERSTATE NO. 15 ELEVATION: 4009.44.
- no 4. HASP ON DROP INLET PAINTED ORANGE 22' RIGHT OF STATION 130+50 WEST ROAD BED
INTERSTATE NO. 15 ELEVATION: 3944.11.
- no 5. NAIL IN LEAD AT SOUTHEAST CORNER OF DROP INLET 36' RIGHT OF STATION 167+60 WEST
ROAD BED INTERSTATE 15 ELEVATION: 3850.02.
- no 6. C.B. CO. BRASS DICK STAMPED 704-15 IN NORTH RETAINING WALL OF SOUTHERN PACIFIC
R.R. OVERCROSSING ELEVATION: 3778.457.
- no 7. BRASS DISK IN 2" COUNTY SURVEYOR'S MONUMENT AT SOUTHEAST CORNER OF SECTION 28,
T4N, R5W, ELEVATION: 3711.55.
- no 8. COAST AND GEODETIC SURVEY BRASS DISK STAMPED F-1047 IN CONCRETE POSTS, 175'
SOUTH OF CENTERLINE OF PHELAN ROAD, 168' SOUTHWEST OF SOUTHWEST SIDE OF WESTERN
MOST CONCRETE PIER OF INTERSTATE 15 OVERPASS ELEVATION: 3508.379.
- no 9. COAST AND GEODETIC SURVEY BRASS DISK STAMPED E-1047 IN CONCRETE POST, 264' NORTH
OF PHELAN ROAD AND 65' EAST OF THE CENTERLINE OF HIGHWAY 395 ELEVATION: 3562.506.
- no 10. COAST AND GEODETIC SURVEY BRASS DISK STAMPED D-1047 IN CONCRETE POST 1.05 MILES
NORTH OF PHELAN ROAD, 36.5' EAST OF THE CENTERLINE OF HIGHWAY 395 AND 68' NORTH
OF THE EXTENDED CENTERLINE OF DIRT ROAD WEST ELEVATION: 3485.193.
- no 11. COAST AND GEODETIC SURVEY BRASS DISK STAMPED C-1048 IN CONCRETE POST 1.85 MILES
NORTH OF PHELAN ROAD, 68' EAST OF THE CENTERLINE OF HIGHWAY 395 AND 5.2' SOUTH
OF NORTHWEST LEG OF STEEL TOWER ELEVATION: 3420.656.
- no 12. BRASS DISK IN 2" COUNTY SURVEYOR'S MONUMENT AT NORTHWEST CORNER SECTION 16, T4N,
R5W ELEVATION: 3518.57.
- no 13. BRASS DISK IN 2" COUNTY SURVEYOR'S MONUMENT AT NORTH $\frac{1}{4}$ CORNER SECTION 20, T4N,
R5W ELEVATION: 3610.98.
- no 14. TOP OF 1" IRON PIPE TAGGED L.S. 3009 AT CENTER OF SECTION 18, T4N, R5W ELEVA-
TION: 3606.54.
- no 15. BRASS DISK IN 2" COUNTY SURVEYOR'S MONUMENT AT SOUTHWEST CORNER SECTION 18, T4N,
- no 16. C.B. CO. BRASS DISK STAMPED 704-25 IN CONCRETE POST 18.6' NORTH OF NORTH RAIL OF
SOUTHERN PACIFIC R.R. TRACKS AND 42' SOUTH OF THE CENTERLINE OF PHELAN ROAD
ELEVATION: 3757.643.

BENCH MARK SUMMARY PG. 2

- no 17. S.B. CO. BRASS DISK STAMPED 704-22 IN CONCRETE POST 9.25 MILES NORTHEAST ALONG SOUTHERN PACIFIC R.R. ACCESS ROAD FROM SUMMIT CROSSING 46.2' SOUTH-WEST FROM SOUTHWEST RAIL, 30.5' NORTHEAST AND 73' NORTHWEST FROM MILE POST 455, 0.2 MILES SOUTHEAST OF BALDY MESA ROAD ELEVATION: 3756.879.
- no 18. 1" REINFORCING ROD, STAMPED 704-21 8.90 MILES NORTHEAST ALONG SOUTHERN PACIFIC R.R. FROM SUMMIT CROSSING 20' SOUTH OF SOUTH RAIL, 43.5' WEST FROM STEEL POST MARKED "PRIVATE PROPERTY" ELEVATION: 3745.314.
- no 19. S.B. CO. BRASS DISK STAMPED 704-17, 7.05 MILES NORTHEAST ALONG SOUTHERN PACIFIC R.R. FROM SUMMIT CROSSING, 24.2' SOUTH OF SOUTH RAIL, 51.3' WEST OF MILE POST 457 ON WEST SIDE OF LARGE ARROYO, SET ON HINGE SIDE GATE POST ELEVATION: 3743.021.
- no 20. 1" REINFORCING ROD STAMPED 704-16, 6.75 MILES NORTHEAST ALONG SOUTHERN PACIFIC R.R. FROM SUMMIT CROSSING 13.7' SOUTH RAIL 559' EAST OF DRAINAGE PIPE AT WEST END OF CUT ELEVATION: 3754.684.
- no 21. BRASS DISK IN 2" COUNTY SURVEYOR'S MONUMENT AT EAST $\frac{1}{4}$ CORNER SECTION 36, R5W ELEVATION: 3810.80.
- no 22. BRASS DISK IN 2" COUNTY SURVEYOR'S MONUMENT AT SOUTHWEST CORNER OF SECTION 32, T4N, R5W ELEVATION: 3953.86.
- no 23. BRASS DISK IN 2" COUNTY SURVEYOR'S MONUMENT AT NORTHWEST CORNER OF SECTION 32, T4N, R5W ELEVATION: 3827.70.
- no 24. TOP 1 $\frac{1}{2}$ " IRON PIPE TAGGED L.S. 2654 AT CENTER EAST NORTHEAST $\frac{1}{64}$ TH CORNER SECTION 7, T3N, R5W ELEVATION: 4002.55.
- no 25. BRASS DISK IN 2" COUNTY SURVEYOR'S MONUMENT AT SOUTHEAST CORNER OF SECTION 27, T4N, R5W ELEVATION: 3662.50.
- no 26. BRASS DISK IN 2" COUNTY SURVEYOR'S MONUMENT AT NORTH $\frac{1}{4}$ CORNER SECTION 35, T4N, R5W ELEVATION: 3598.84.
- no 27. BRASS DISK IN 2" COUNTY SURVEYOR'S MONUMENT AT SOUTH $\frac{1}{4}$ CORNER SECTION 25, T4N, R5W ELEVATION: 3522.42.
- no 28. 1" REINFORCING ROD STAMPED 704-14, 5.75 MILES NORTHEAST ALONG SOUTHERN PACIFIC R.R. FROM SUMMIT CROSSING 11.1' SOUTH OF SOUTH RAIL AND 203.2' WEST OF SIGN WITH "X" ON SIGN ELEVATION: 3800.593.
- no 29. S.B. CO. BRASS DISK STAMPED 704-13 IN CONCRETE POST 5.35 MILES NORTHEAST ALONG SOUTHERN PACIFIC R.R. FROM SUMMIT CROSSING, 46' NORTHEAST OF THE NORTHEAST RAIL AND 67' SOUTH OF THE CENTERLINE OF RANCHERO ROAD ELEVATION: 3809.126.
- no 30. 1" REINFORCING ROD STAMPED 704-12, 4.95 MILES NORTHEAST ALONG SOUTHERN PACIFIC R.R. FROM SUMMIT CROSSING 2.2' NORTHEAST OF MILE POST 459, 14.2' SOUTHWEST OF SOUTHWEST RAIL AND 45' NORTHWEST OF THE TOE OF CUT SLOPE ELEVATION: 3820.432.

BENCH MARK SUMMARY PG. 3

- W 31. S.B. CO. BRASS DISK STAMPED 704-11, 4.60 MILES NORTHEAST ALONG SOUTHERN PACIFIC R.R. FROM SUMMIT CROSSING, 291' NORTHEAST OF NORTHEAST RAIL AND 91' SOUTHEAST OF DIRT ROAD, SET IN SOUTHWEST LEG OF SOUTHERN CALIFORNIA EDISON TOWER ELEVATION: 3825.038.
- N 32. $\frac{1}{2}$ " REINFORCING ROD STAMPED 704-10, 4.35 MILES NORTHEAST ALONG SOUTHERN PACIFIC R.R., 35' SOUTHWEST OF SOUTHWEST RAIL AND 100' SOUTHEAST OF "Y" OF ROAD WHICH FORKS OFF TO SOUTHWEST ELEVATION: 3838.421.
- W 33. S.B. CO. BRASS DISK STAMPED 704-9 IN CONCRETE POST 3.90 MILES NORTHEAST ALONG SOUTHERN PACIFIC R.R. FROM SUMMIT CROSSING, 46.7' SOUTHWEST OF SOUTHWEST RAIL, 183' NORTHWEST OF MILE POST 460 AND HIGH VOLTAGE SIGN AND 107.5' NORTHWEST OF TRACK DERAIL SWITCH AND 57.3' SOUTHWEST ELEVATION: 3835.166.
- N 34. BRASS DISK IN 2" COUNTY SURVEYOR'S MONUMENT AT SOUTH $\frac{1}{4}$ CORNER SECTION 2, T3N, R5W, ELEVATION: 3741.61.
- N 35. SOUTHERN CALIFORNIA EDISON BRASS DISK TAGGED R.C.E. 7211 AT SOUTHEAST CORNER SECTION 2, T3N, R5W ELEVATION: 3703.55.
- W 36. BRASS DISK IN 2" COUNTY SURVEYOR'S MONUMENT AT INTERSECTION OF CENTERLINES OF RANCHERO ROAD AND ESCONDIDO ROAD, SOUTH $\frac{1}{4}$ CORNER SECTION 35, T4N, R5W, ELEVATION: 3680.51.
- N 37. BRASS DISK IN 2" COUNTY SURVEYOR'S MONUMENT AT SOUTHEAST CORNER OF SECTION 35, T4N, R5W ELEVATION: 3637.35.
- W 38. BRASS DISK IN 2" COUNTY SURVEYOR'S MONUMENT AT SOUTH $\frac{1}{4}$ CORNER SECTION 36 T4N, R5W ELEVATION: 3594.04.
- W B.M.L. = 39
39. DEPARTMENT OF WATER RESOURCES BRASS DISK STAMPED 399.6A IN EAST BRIDGE ABUTMENT AT RANCHERO ROAD AND 11TH STREET ELEVATION: 3469.33.
- N 40. DIVISION OF HIGHWAYS BRASS DISK IN CONCRETE MONUMENT ON CENTERLINE OF FRONTAGE ROAD AT EAST 1/16TH CORNER OF SECTION 28, T4N, R5W ELEVATION: 3658.89.



PRIVATE

3400

3420

3459

3501

3554

R. 6W

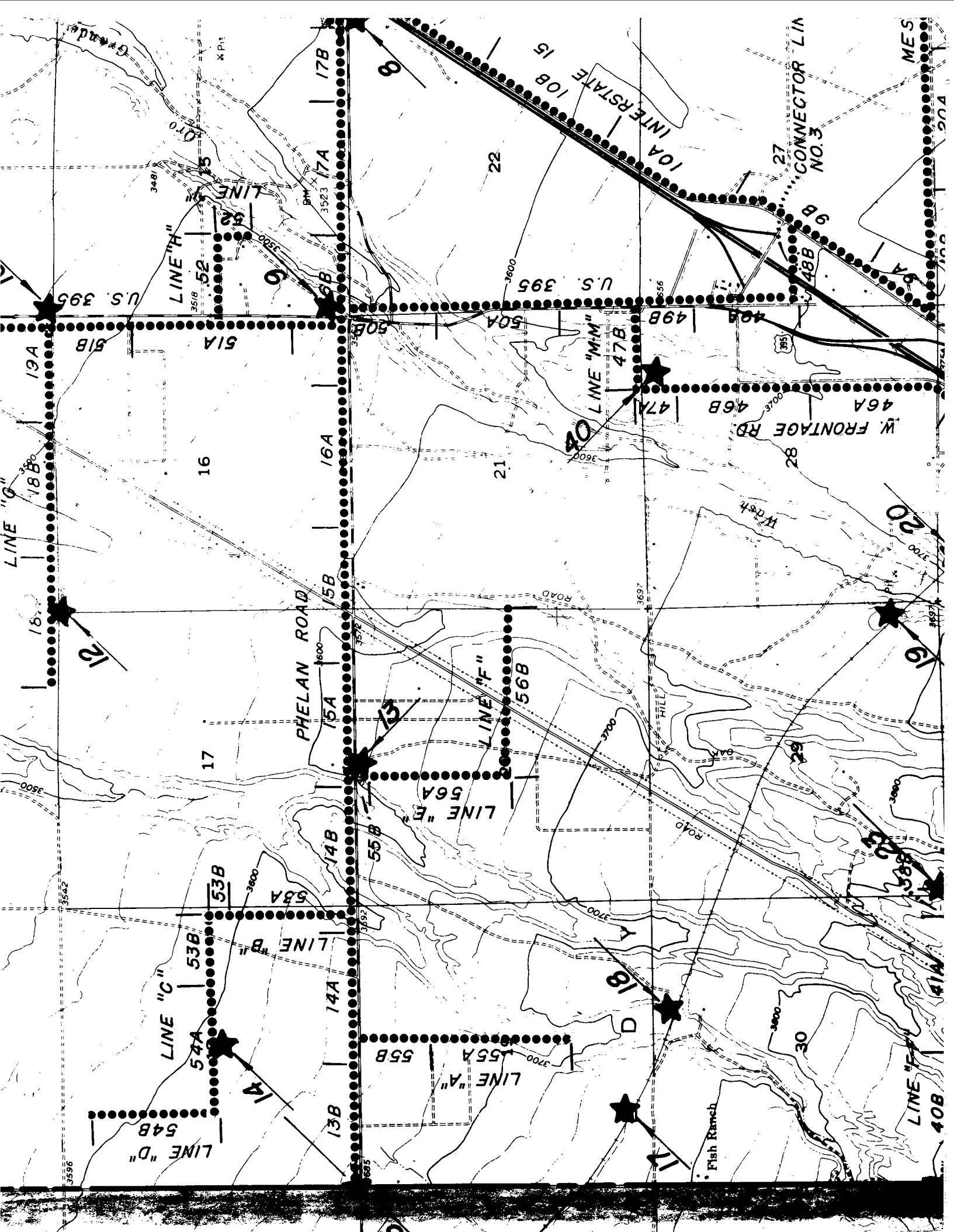
T. 5W

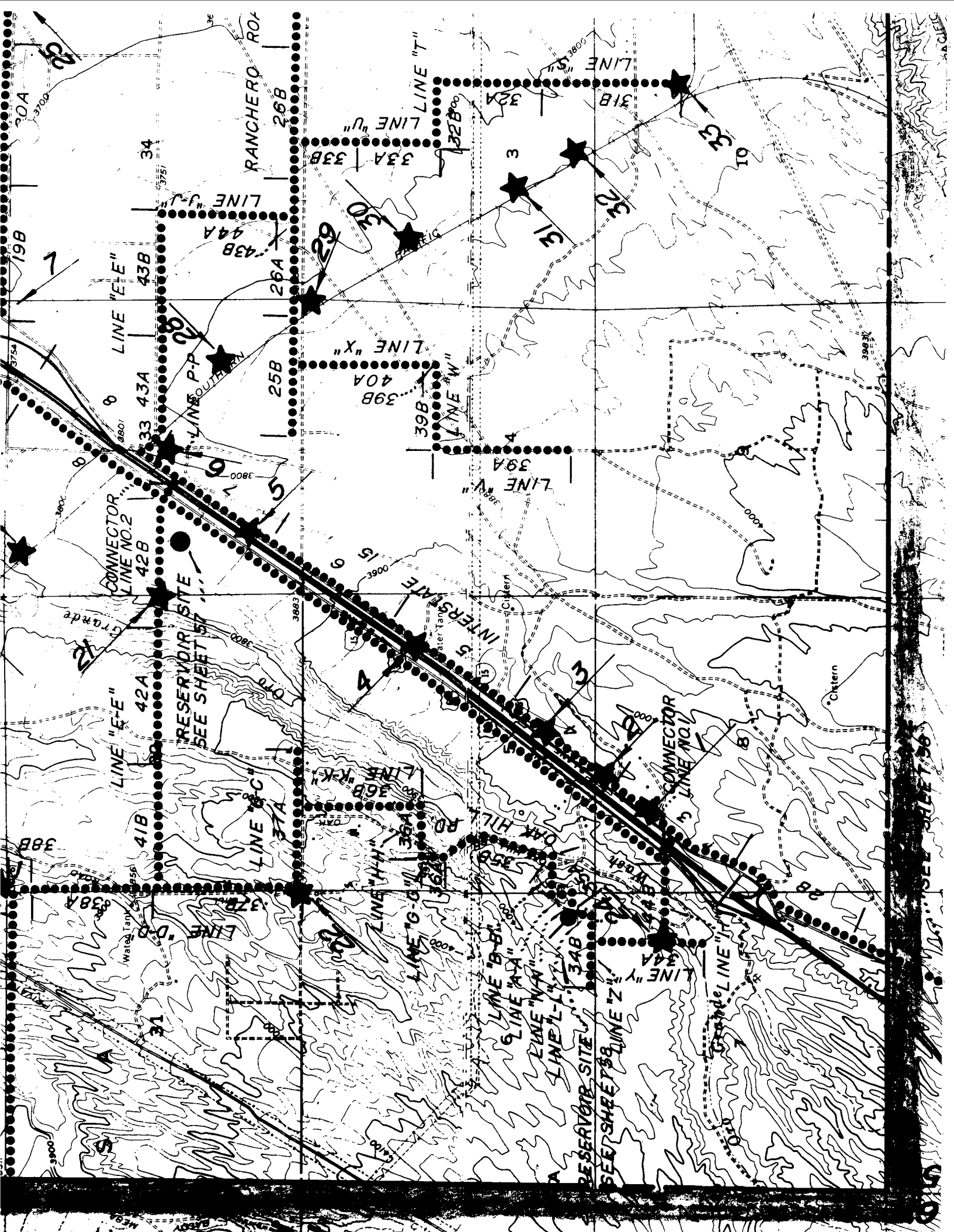
BALDY

10

9

3554







5. NAIL IN ELEVATION
6. S.B. CO. ELEVATION
7. BRASS DISK 3711.55.
8. COAST AND PHELAN RO. ELEVATION
9. COAST AND 65' EAST
10. COAST AND 36.5' EAST ELEVATION
11. COAST AND 68' EAST (3420.656.
12. BRASS DISK
13. BRASS DISK
14. TOP OF 1"
15. BRASS DISK
16. S.B. CO. B TRACKS AND
17. S.B. CO. B ACCESS ROA FROM MILE
18. ½" REINFOR 20' SOUTH
19. S.B. CO. B CROSSING, HINGE SIDE
20. ½" REINFOR 13.7' SOUTH
21. BRASS DISK
22. BRASS DISK

- 23. BRASS DISK 3827.70.
- 24. TOP 1 1/2" IR 4002.55.
- 25. BRASS DISK 3662.50.
- 26. BRASS DISK
- 27. BRASS DISK
- 28. 1/2" REINFORC 11.1' SOUT
- 29. S.B. CO. FROM SUMM ROAD ELEV.
- 30. 1/2" REINFORC 2.2' NORTH SLOPE ELE
- 31. S.B. CO. CROSSING, SOUTHERN
- 32. 1/2" REINFORC SOUTHWEST
- 33. S.B. CO. SUMMIT CR SIGN AND
- 34. BRASS DIS
- 35. SOUTHERN ELEVATION
- 36. BRASS DIS DIDO ROAD
- 37. BRASS DIS 3637.35.
- 38. BRASS DIS
- 39. DEPARTMEN 11TH STRE
- 40. DIVISION

